

EFFECTIVE  
August 12, 2024

**SOUTHERN WEST VIRGINIA  
COMMUNITY AND TECHNICAL COLLEGE**

**Organizational Chart**

*Dr. Pamela L. Alderman*

08/07/2024

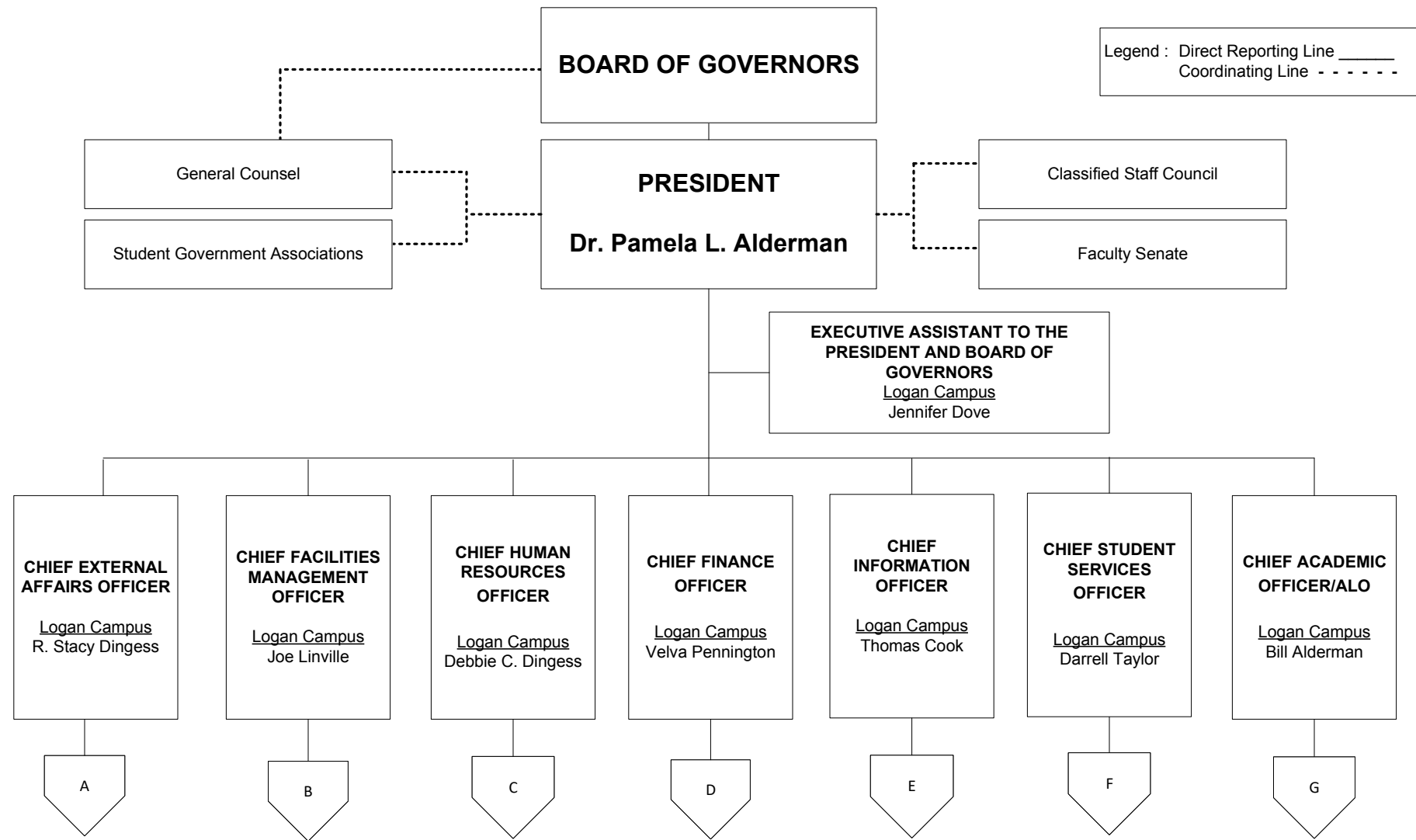


**OFFICE OF HUMAN RESOURCES**

**SOUTHERN WEST VIRGINIA COMMUNITY AND TECHNICAL COLLEGE  
ORGANIZATIONAL CHART**

**INDEX**

President.....	Page 1
President's Cabinet	
External Affairs.....	Page 2
Communications	
Development	
Facilities .....	Page 3
Human Resources.....	Page 4
Finance .....	Page 5
Controller	
Budgets and Purchasing	
Office of Information Technology .....	Page 6
Applications Programming/Development	
Distance Education	
Web Development	
Institutional Research	
Network Services	
User Services	
Student Services.....	Page 7-8
Admissions.....	Page 7
Financial Assistance.....	Page 7
Registrar.....	Page 7
Student Success.....	Page 7
Academic Affairs/ALO.....	Page 8-11
Accreditation and Assessment.....	Page 8
Community Relations.....	Page 8
Library Services.....	Page 8
Professional and Transfer Programs.....	Page 9
Allied Health and Nursing .....	Page 10
Non-Traditional Programs .....	Page 11
Workforce Development .....	Page 11



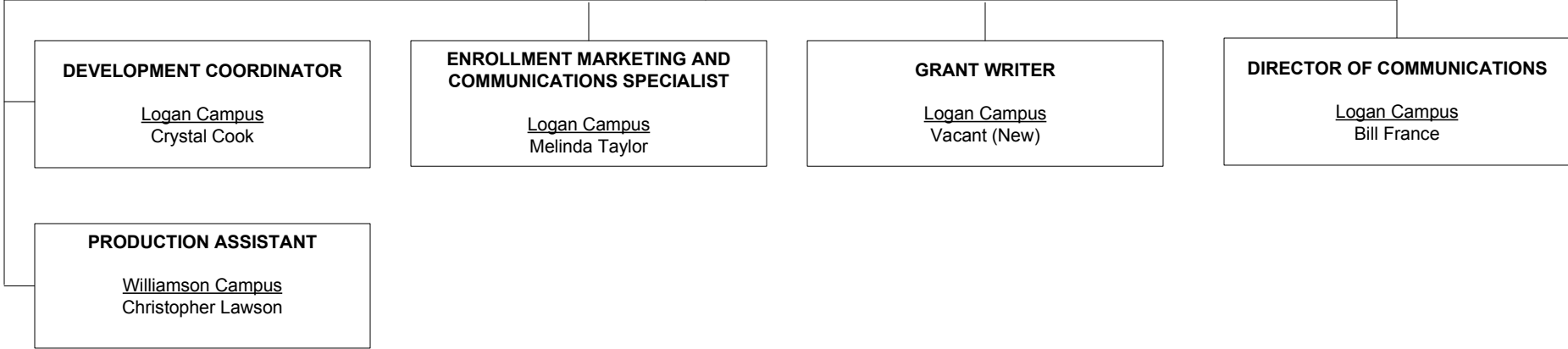
Legend : Direct Reporting Line \_\_\_\_\_  
Coordinating Line - - - - -

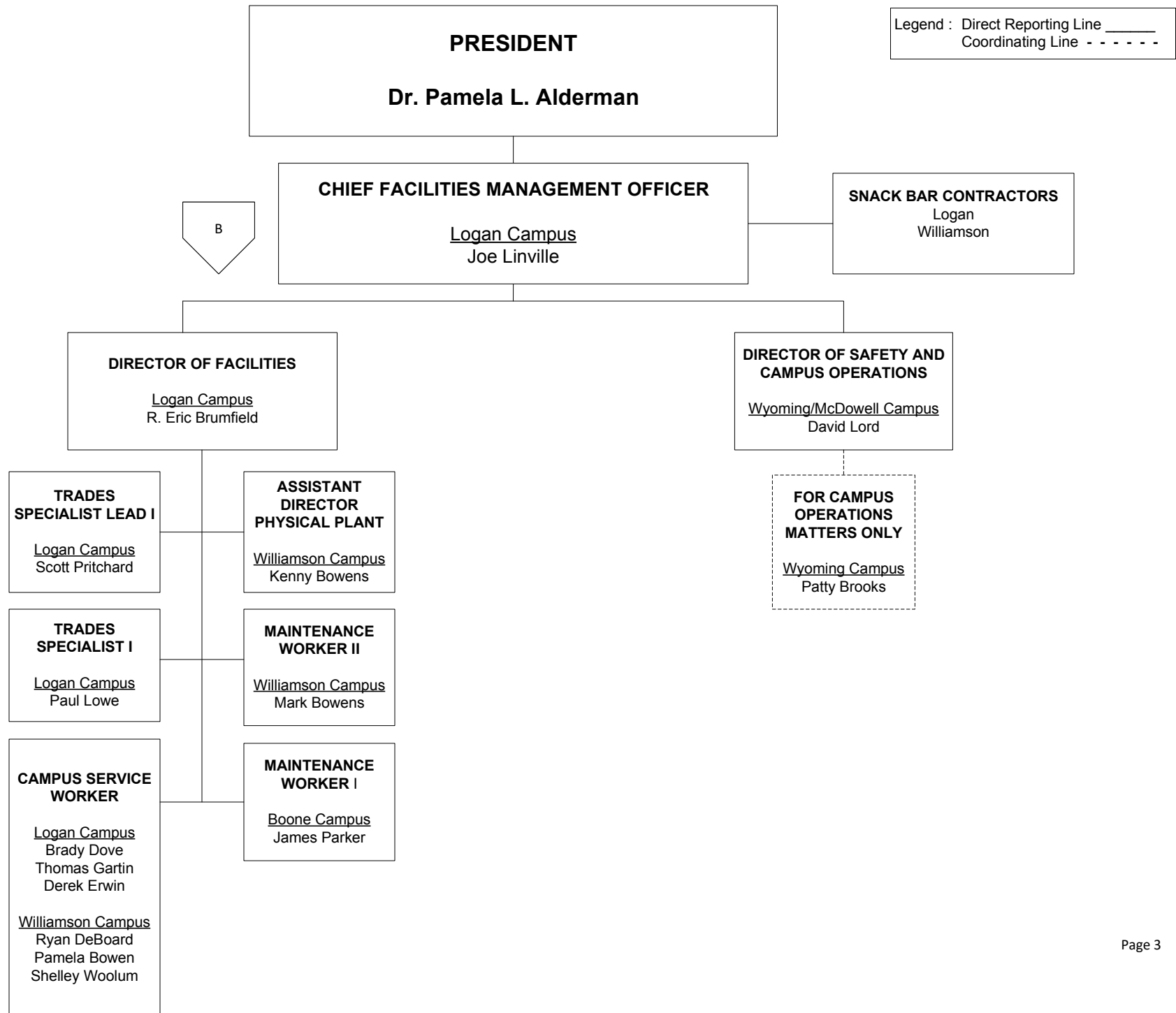
**PRESIDENT**  
**Dr. Pamela L. Alderman**

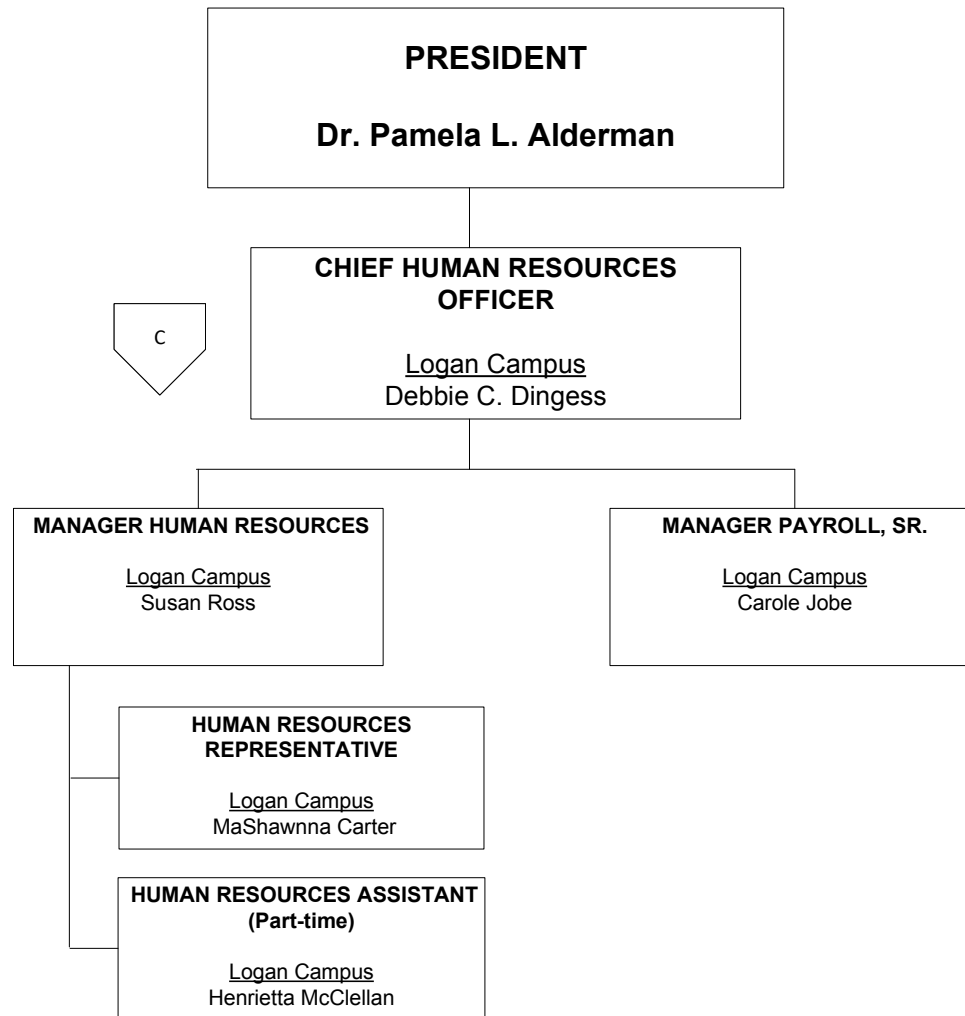
A

**CHIEF EXTERNAL AFFAIRS OFFICER**  
Logan Campus  
R. Stacy Dingess

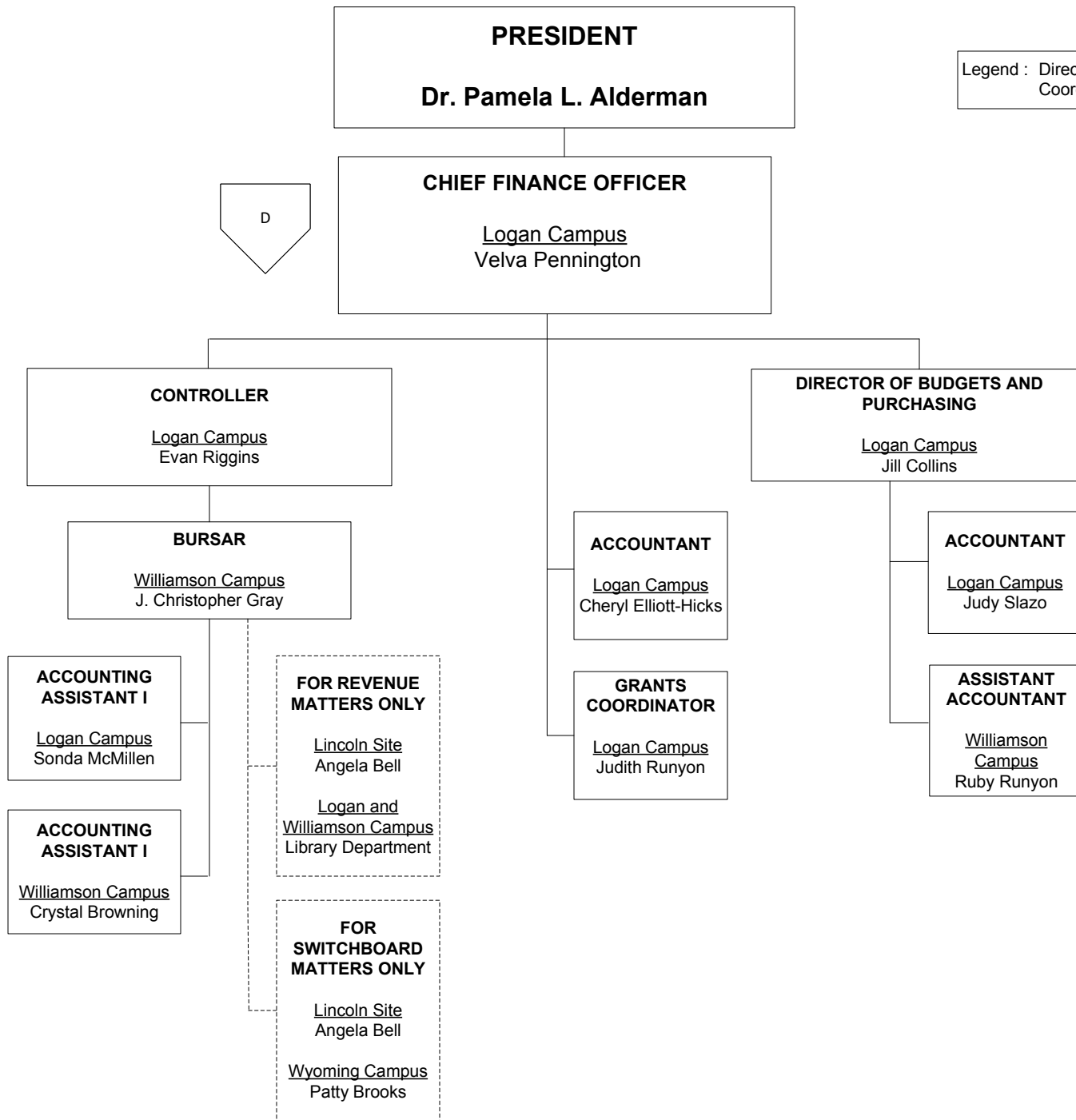
**EXECUTIVE ASSISTANT TO THE  
CHIEF EXTERNAL AFFAIRS OFFICER**  
Logan Campus  
Tammy Toppings







Legend : Direct Reporting Line \_\_\_\_\_  
Coordinating Line - - - - -



Legend : Direct Reporting Line \_\_\_\_\_  
Coordinating Line - - - - -

D

**PRESIDENT**  
**Dr. Pamela L. Alderman**

Legend : Direct Reporting Line \_\_\_\_\_  
Coordinating Line - - - - -

E

**CHIEF INFORMATION OFFICER**  
Logan Campus  
Thomas Cook

**DIRECTOR OF NETWORK SERVICES**  
Logan Campus  
Joseph Justice

**DIRECTOR OF INSTITUTIONAL RESEARCH**  
Logan Campus  
Sarah Brown

**DIRECTOR OF DISTANCE EDUCATION**  
Williamson Campus  
Tim Owens

**DIRECTOR OF USER SERVICES**  
Logan Campus  
Curtis Campbell

**SYSTEMS ADMINISTRATOR**  
Logan Campus  
Andrew Portzer

**APPLICATIONS PROGRAMMER/ DEVELOPER LEAD**  
Logan Campus  
Brian Chaney

**WEB DEVELOPER**  
Logan Campus  
Christopher Thompson

**INFORMATION SYSTEMS TECHNICIAN**  
Logan Campus  
Lee Stroud  
J. Brandon Vance  
Vicki Workman  
Wyoming Campus  
Michael Hunter  
Williamson Campus  
Matthew Hatfield

**APPLICATIONS PROGRAMMER**  
Logan Campus  
Mark Justice



**PRESIDENT**  
**Dr. Pamela L. Alderman**

Legend : Direct Reporting Line \_\_\_\_\_  
Coordinating Line - - - - -

F

**CHIEF STUDENT SERVICES OFFICER**  
Logan Campus  
Darrell Taylor

STUDENT GOVERNMENT ASSOCIATIONS

**EXECUTIVE ASSISTANT TO THE CHIEF STUDENT SERVICES OFFICER**  
Logan Campus  
Shelly Parker

**DIRECTOR OF STUDENT SUCCESS**  
Logan Campus  
Dianna Toler

**DIRECTOR OF ADMISSIONS**  
Logan Campus  
Tim Ooten

**REGISTRAR**  
Logan Campus  
Teri Wells

**DIRECTOR OF FINANCIAL ASSISTANCE**  
Logan Campus  
Mary Trent

**STUDENT SUCCESS ADVISOR**

Boone Campus  
Elijah Hooker

Logan Campus  
Brian Carter  
Michele Moore (TANF Grant)  
Cassandra Vance  
1 Vacant Position (ASCEND Grant)

Williamson Campus  
Elizabeth Evans  
Cheryl Thacker (TANF Grant)  
Roger Williamson

FOR STUDENT SUCCESS MATTERS ONLY

Lincoln Site  
Angela Bell

**STUDENT SUCCESS CENTER COORDINATOR**

Logan Campus  
Hattie Newsome

**PROGRAM ASSISTANT I**

Logan Campus  
Brittany Dove

**RECRUITMENT AND OUTREACH SPECIALIST**

Logan Campus  
Mike Collins

**STUDENT COMMUNICATIONS SPECIALIST**

Williamson Campus  
Shelly Stewart

FOR ADMISSIONS AND/OR STUDENT RECORDS MATTERS ONLY

Lincoln Site  
Angela Bell

FOR ADMISSIONS MATTERS ONLY

Wyoming Campus  
Patty Brooks

**STUDENT RECORDS ASSISTANT**

Williamson Campus  
Paula Maynard

**TRANSFER COORDINATOR**

Logan Campus  
Angela Dotson

**PROGRAM ASSISTANT I**

Wyoming Campus  
Patty Brooks

**FINANCIAL AID COUNSELOR**

Logan Campus  
Emily Mills  
1 Vacant Position

Williamson Campus  
Kelly Jacobs

**FINANCIAL AID ASSISTANT (Part-time)**

Logan Campus  
Roberta Carter

**PRESIDENT**  
**Dr. Pamela L. Alderman**

Legend : Direct Reporting Line \_\_\_\_\_  
 Coordinating Line - - - - -

G

**CHIEF ACADEMIC OFFICER/  
 ACCREDITATION LIAISON OFFICER**  
Logan Campus  
 Bill Alderman

**EXECUTIVE ASSISTANT TO THE  
 CHIEF ACADEMIC OFFICER**  
Logan Campus  
 Sandra Podunavac

**ADMINISTRATIVE  
 SECRETARY  
 (Part-time)**  
Logan Campus  
 Nancy Fala

**DIRECTOR OF LIBRARIES II**  
Logan Campus  
 Kimberly Maynard

**DIRECTOR OF ACCREDITATION  
 AND ASSESSMENT**  
Logan Campus  
 Regina Bias

**DEAN OF PROFESSIONAL AND  
 TRANSFER PROGRAMS**  
Logan Campus  
 Dr. Michael Jiles

**DEAN OF ALLIED HEALTH  
 AND NURSING**  
Logan Campus  
 Dr. Lisa Haddox-Heston

**DEAN OF NON-TRADITIONAL  
 PROGRAMS**  
Logan Campus  
 Melinda Saunders

**LIBRARY  
 TECHNICAL  
 ASSISTANT II**  
Logan Campus  
 Cassandra Goble  
Williamson Campus  
 Anita Messer

**LIBRARY  
 TECHNICAL  
 ASSISTANT I**  
Williamson Campus  
 Tara Drake

**EXECUTIVE DIRECTOR OF CAMPUS  
 AND COMMUNITY RELATIONS**  
Williamson Campus  
 Rita Roberson

**EXECUTIVE DIRECTOR OF CAMPUS  
 AND COMMUNITY RELATIONS**  
Boone Campus  
 Brittany Justice

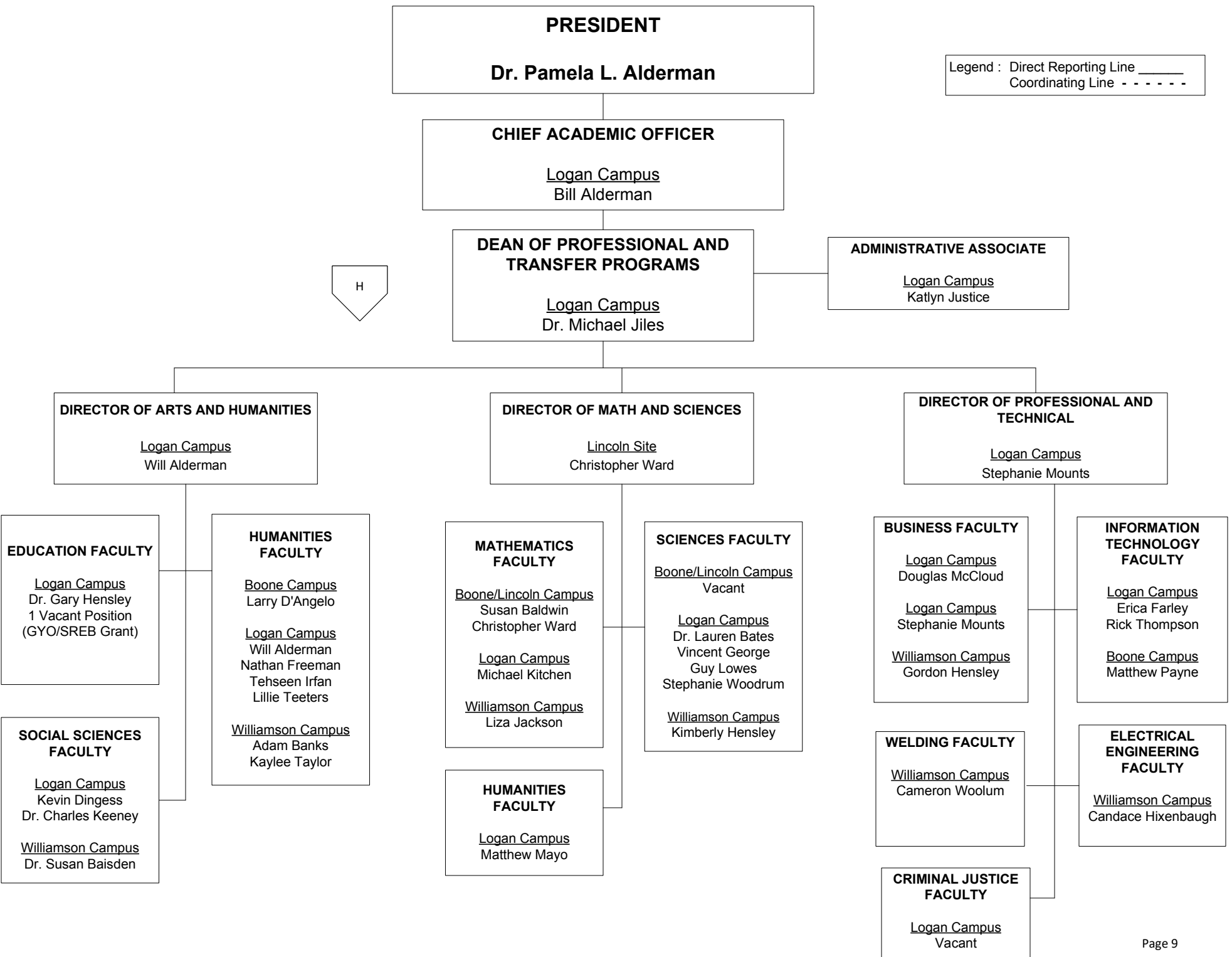
**SITE  
 COORDINATOR**  
Lincoln Site  
 Angela Bell

**OFFICE  
 ASSISTANT  
 (Part-time)**  
Lincoln Site  
 Brittney Adkins

H

I

J



Legend : Direct Reporting Line \_\_\_\_\_  
 Coordinating Line - - - - -

H

