

EFFECTIVE  
4/08/2025

**SOUTHERN WEST VIRGINIA  
COMMUNITY AND TECHNICAL COLLEGE**

**Organizational Chart**

*Corley F. Dennison III*

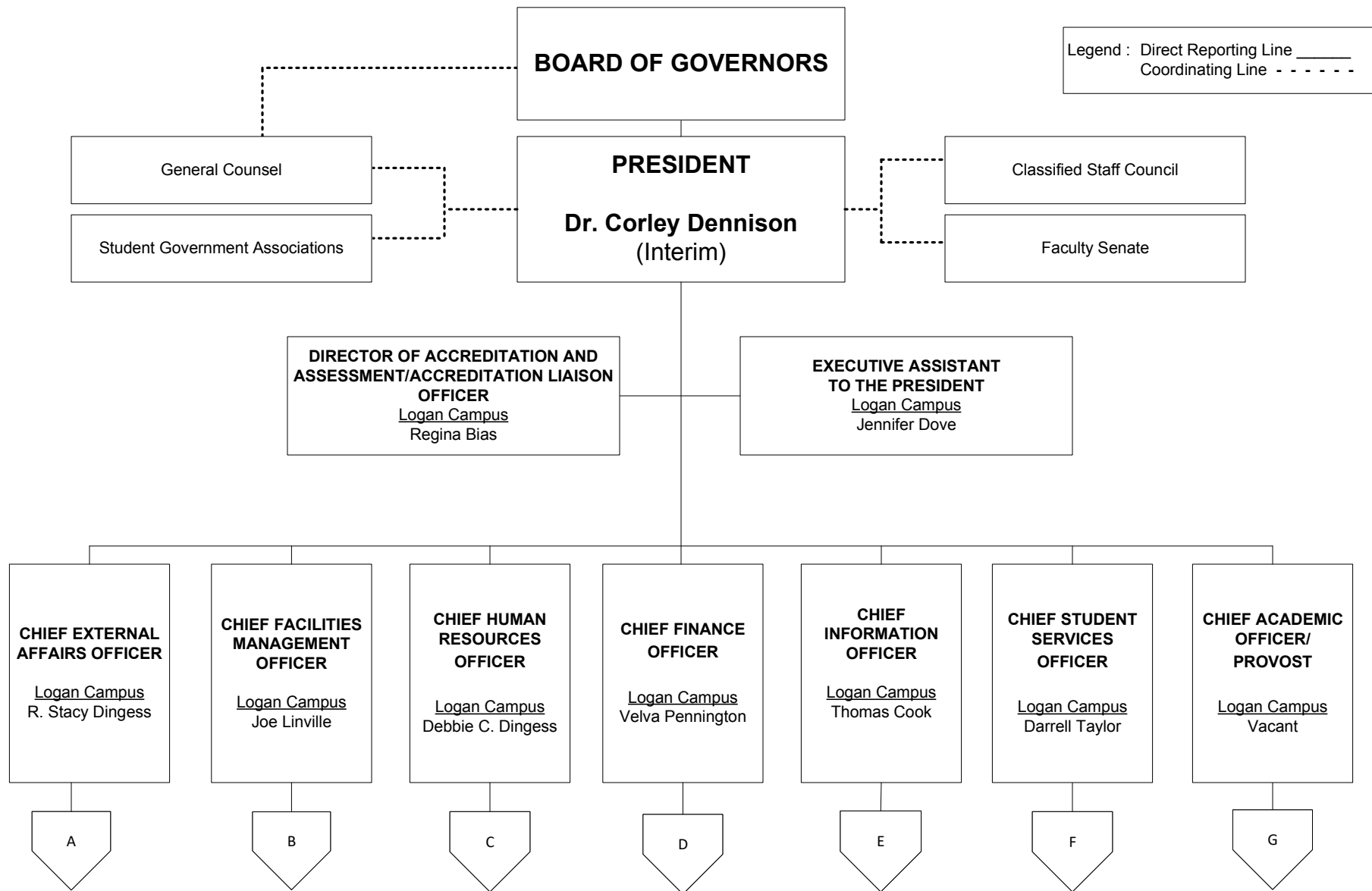
04/15/2025



**SOUTHERN WEST VIRGINIA COMMUNITY AND TECHNICAL COLLEGE  
ORGANIZATIONAL CHART**

**INDEX**

President.....	Page 1
President's Cabinet	
External Affairs.....	Page 2
Communications	
Development	
Facilities .....	Page 3
Human Resources.....	Page 4
Finance .....	Page 5
Controller	
Budgets and Purchasing	
Office of Information Technology .....	Page 6
Applications Programming/Development	
Distance Education	
Web Development	
Institutional Research	
Network Services	
User Services	
Student Services.....	Page 7-8
Admissions.....	Page 7
Financial Assistance.....	Page 7
Registrar.....	Page 7
Student Success.....	Page 7
Academic Affairs/ALO.....	Page 8-11
Accreditation and Assessment.....	Page 8
Community Relations.....	Page 8
Library Services.....	Page 8
Professional and Transfer Programs.....	Page 9
Allied Health and Nursing .....	Page 10
Non-Traditional Programs .....	Page 11
Workforce Development .....	Page 11



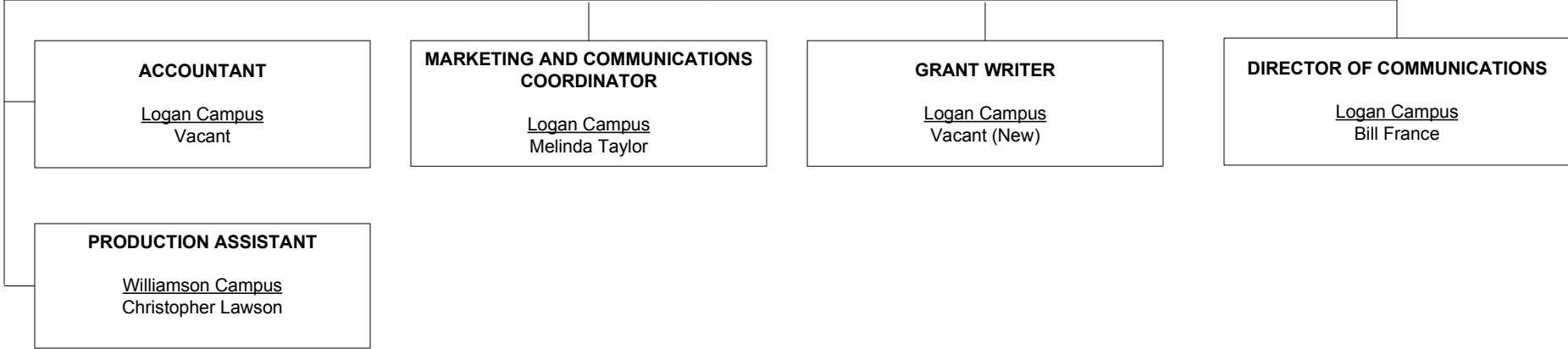
Legend : Direct Reporting Line \_\_\_\_\_  
Coordinating Line - - - - -

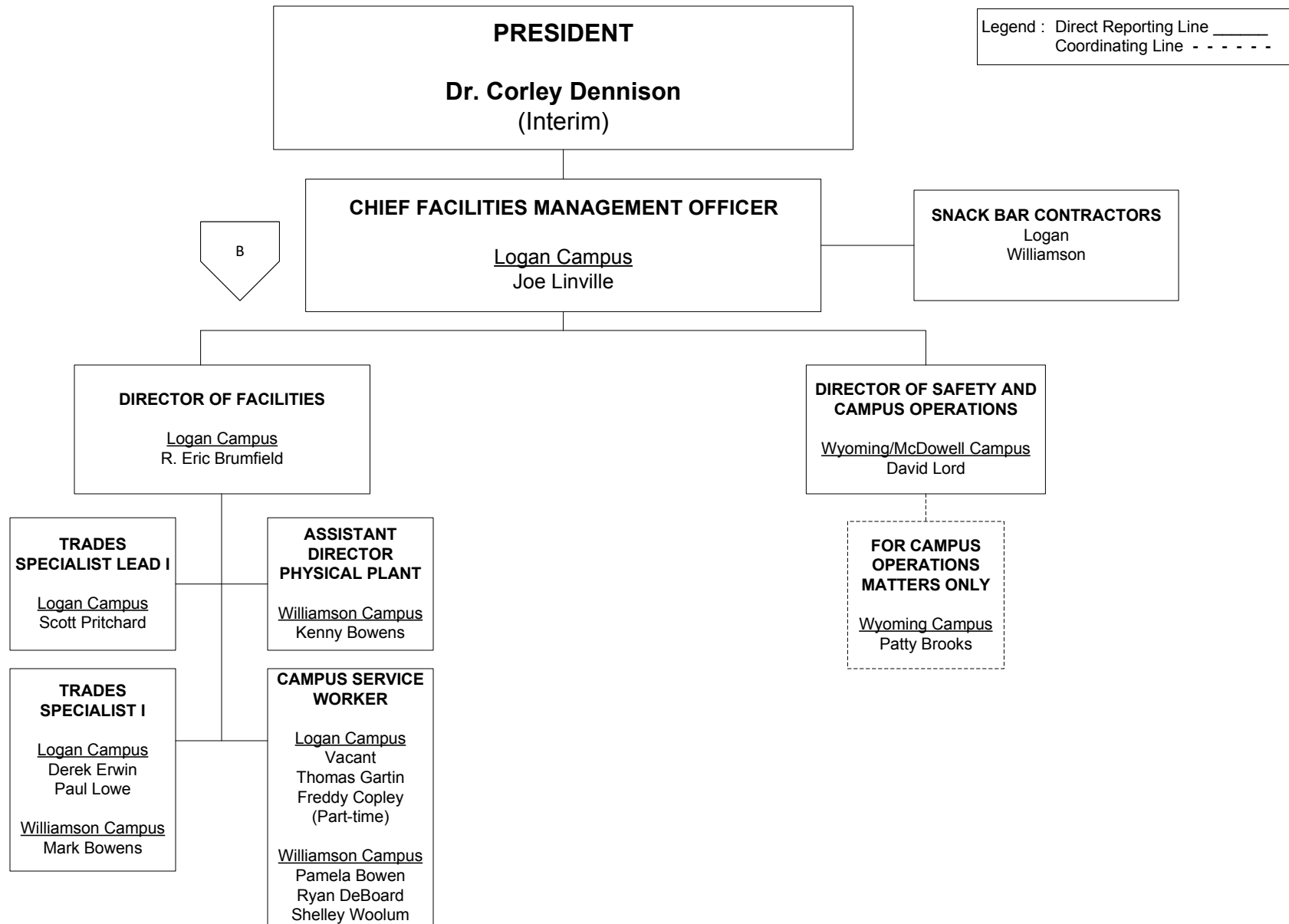
**PRESIDENT**  
**Dr. Corley Dennison**  
(Interim)

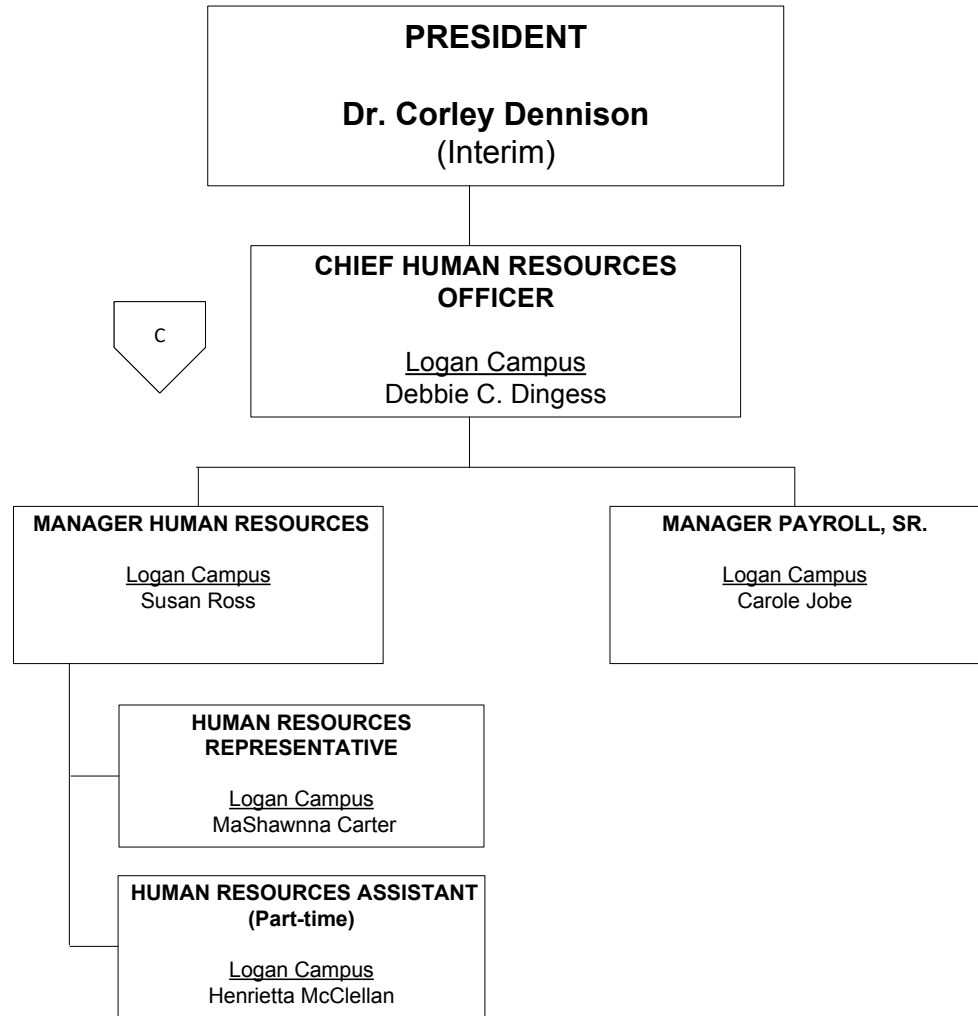
A

**CHIEF EXTERNAL AFFAIRS OFFICER**  
Logan Campus  
R. Stacy Dingess

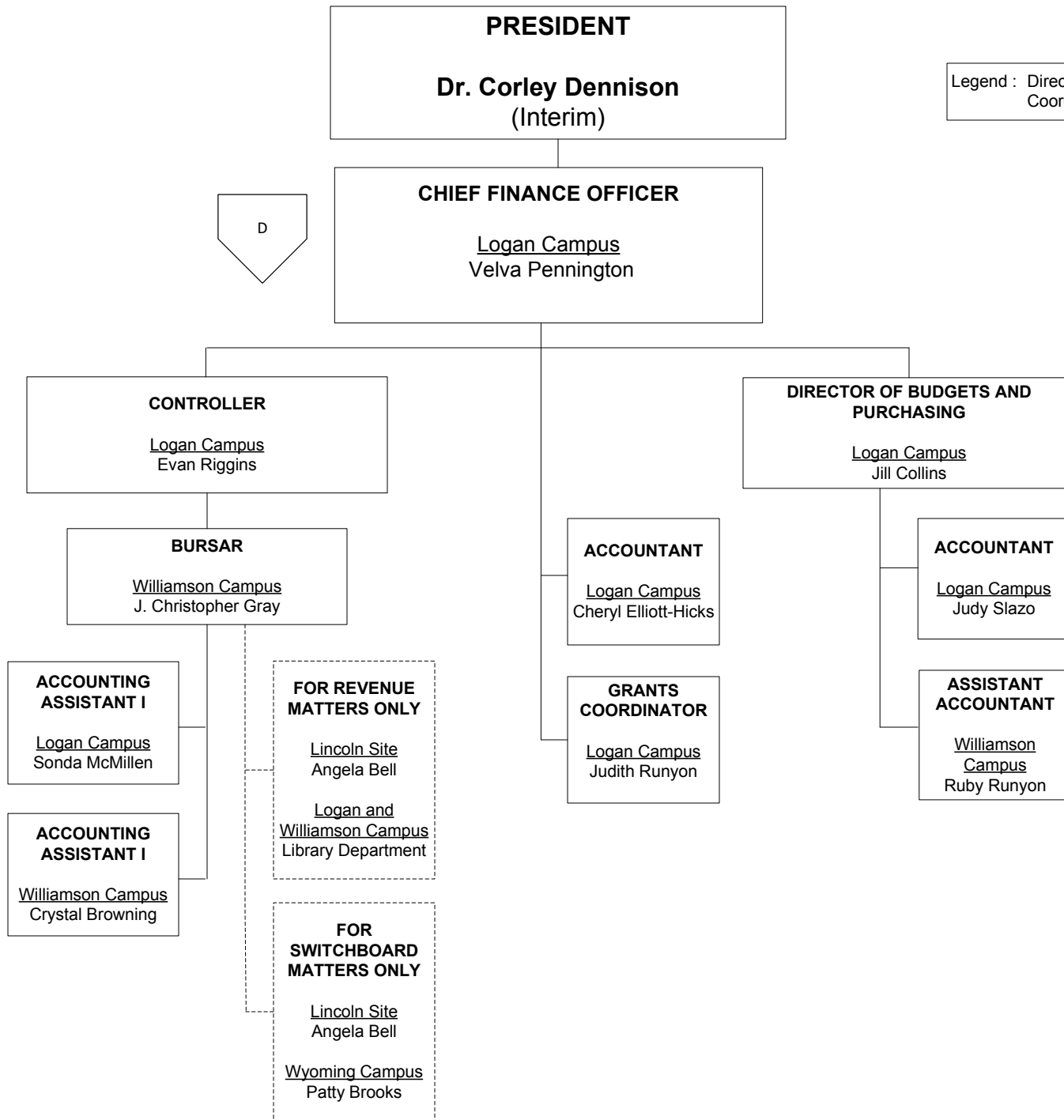
**EXECUTIVE ASSISTANT TO THE CHIEF  
EXTERNAL AFFAIRS OFFICER/  
OPERATIONS MANAGER**  
Logan Campus  
Tammy Toppings







Legend : Direct Reporting Line \_\_\_\_\_  
 Coordinating Line - - - - -



Legend : Direct Reporting Line \_\_\_\_\_  
Coordinating Line - - - - -

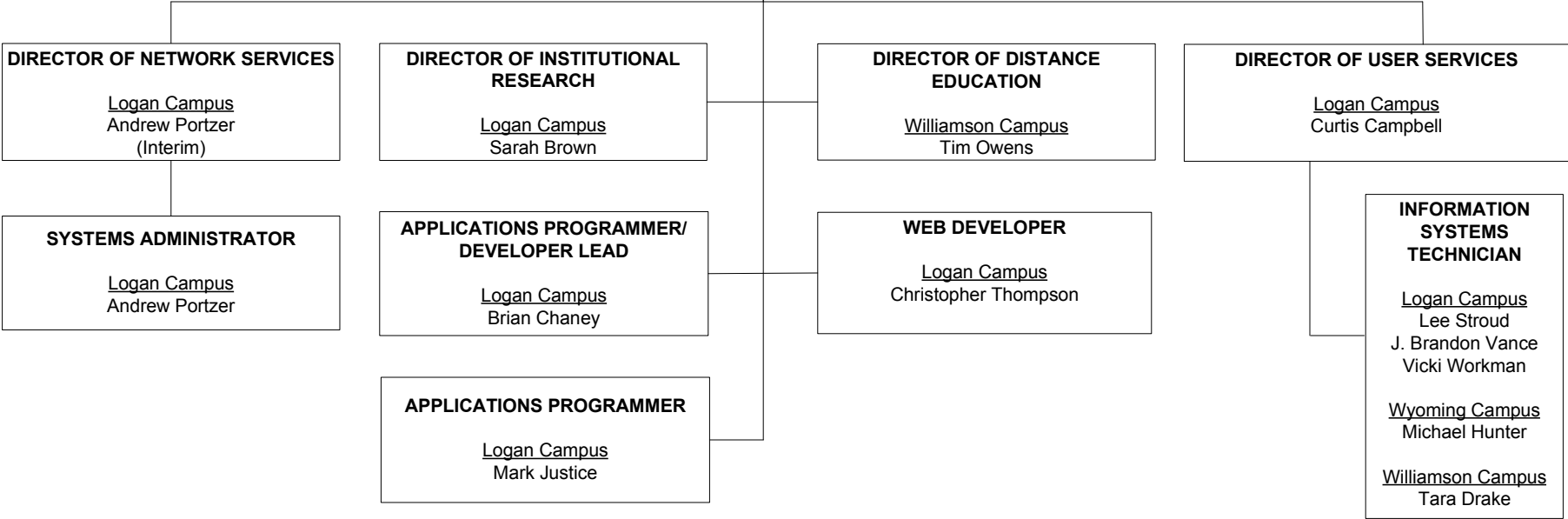
D

**PRESIDENT**  
**Dr. Corley Dennison**  
(Interim)

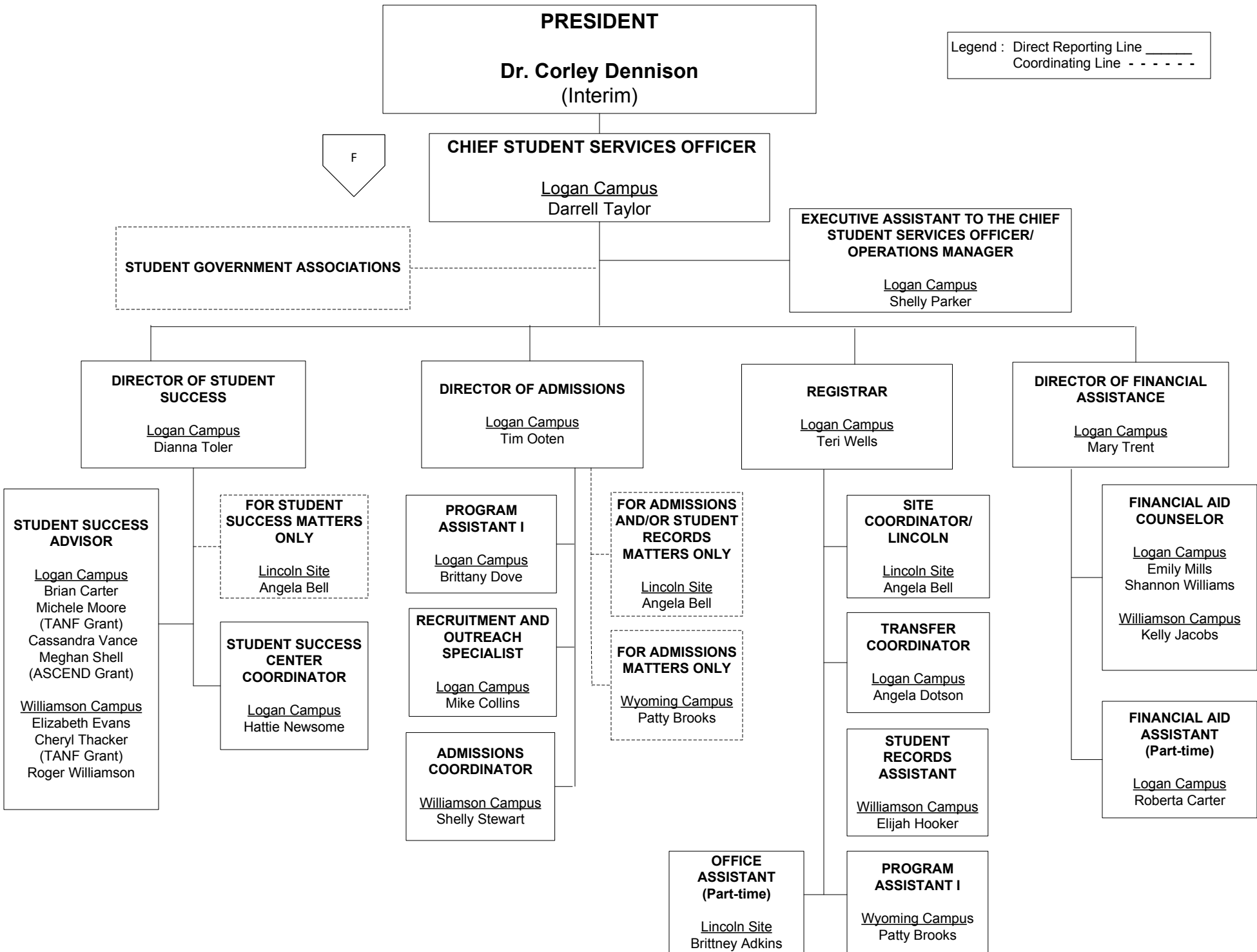
Legend : Direct Reporting Line \_\_\_\_\_  
Coordinating Line - - - - -

E

**CHIEF INFORMATION OFFICER**  
Logan Campus  
Thomas Cook







**PRESIDENT**  
**Dr. Corley Dennison**  
(Interim)

Legend : Direct Reporting Line \_\_\_\_\_  
Coordinating Line - - - - -

G

**CHIEF ACADEMIC OFFICER/PROVOST**  
Logan Campus  
Vacant

**EXECUTIVE ASSISTANT TO THE  
CHIEF ACADEMIC OFFICER**  
Logan Campus  
Sandra Podunavac

**ADMINISTRATIVE  
SECRETARY**  
(Part-time)  
Logan Campus  
Nancy Fala

**DIRECTOR OF LIBRARIES II**  
Logan Campus  
Kimberly Maynard

**EXECUTIVE DIRECTOR OF CAMPUS  
AND COMMUNITY RELATIONS**  
Williamson Campus  
Rita Roberson

**DEAN OF PROFESSIONAL AND  
TRANSFER PROGRAMS**  
Logan Campus  
Christopher Ward (Interim)

**DEAN OF ALLIED HEALTH  
AND NURSING**  
Logan Campus  
Dr. Lisa Haddox-Heston

**DEAN OF NON-TRADITIONAL  
PROGRAMS**  
Logan Campus  
Melinda Saunders

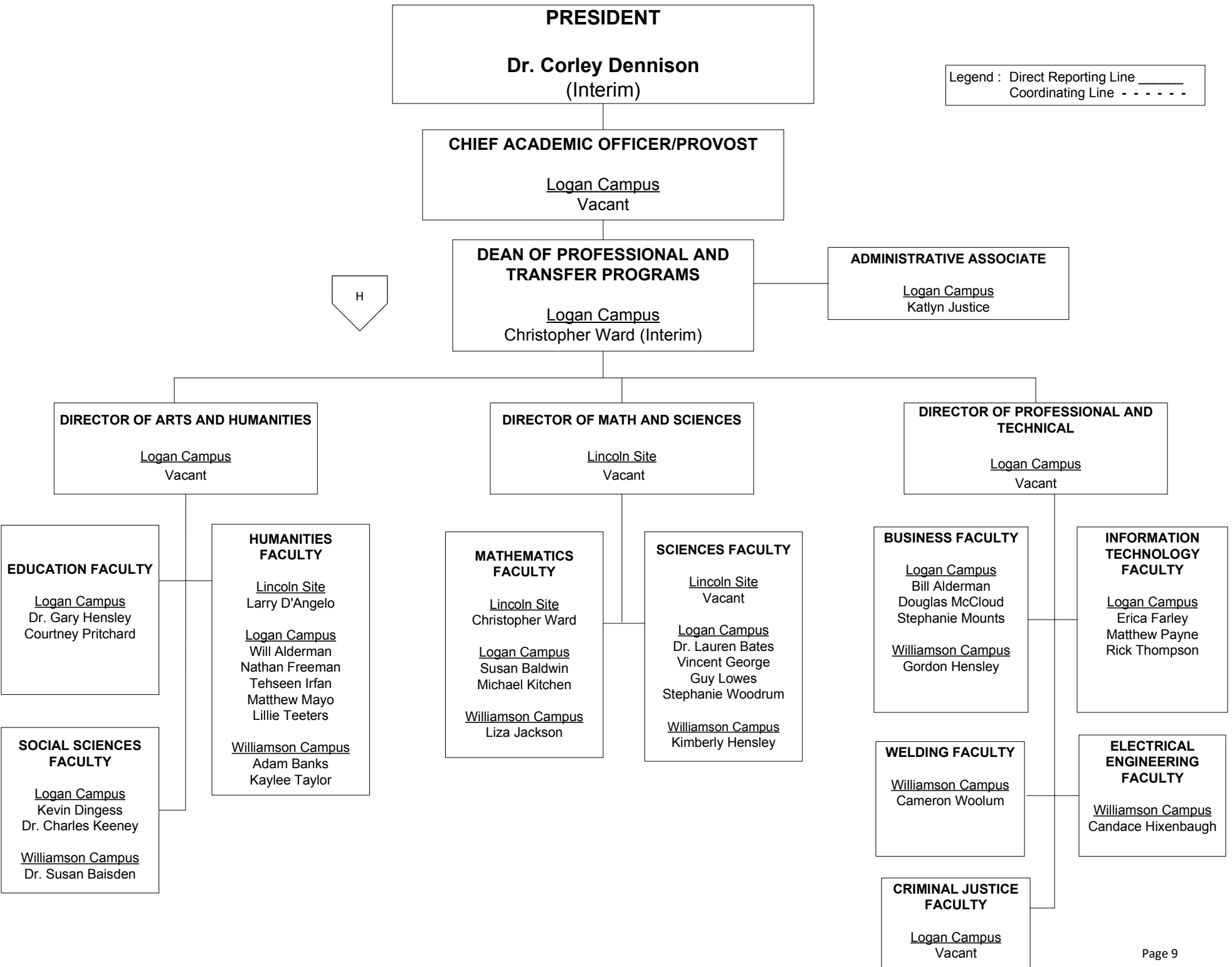
**LIBRARY  
TECHNICAL  
ASSISTANT II**  
Logan Campus  
Cassandra Goble  
Williamson Campus  
Anita Messer

**LIBRARY  
TECHNICAL  
ASSISTANT I**  
Williamson Campus  
Vacant

H

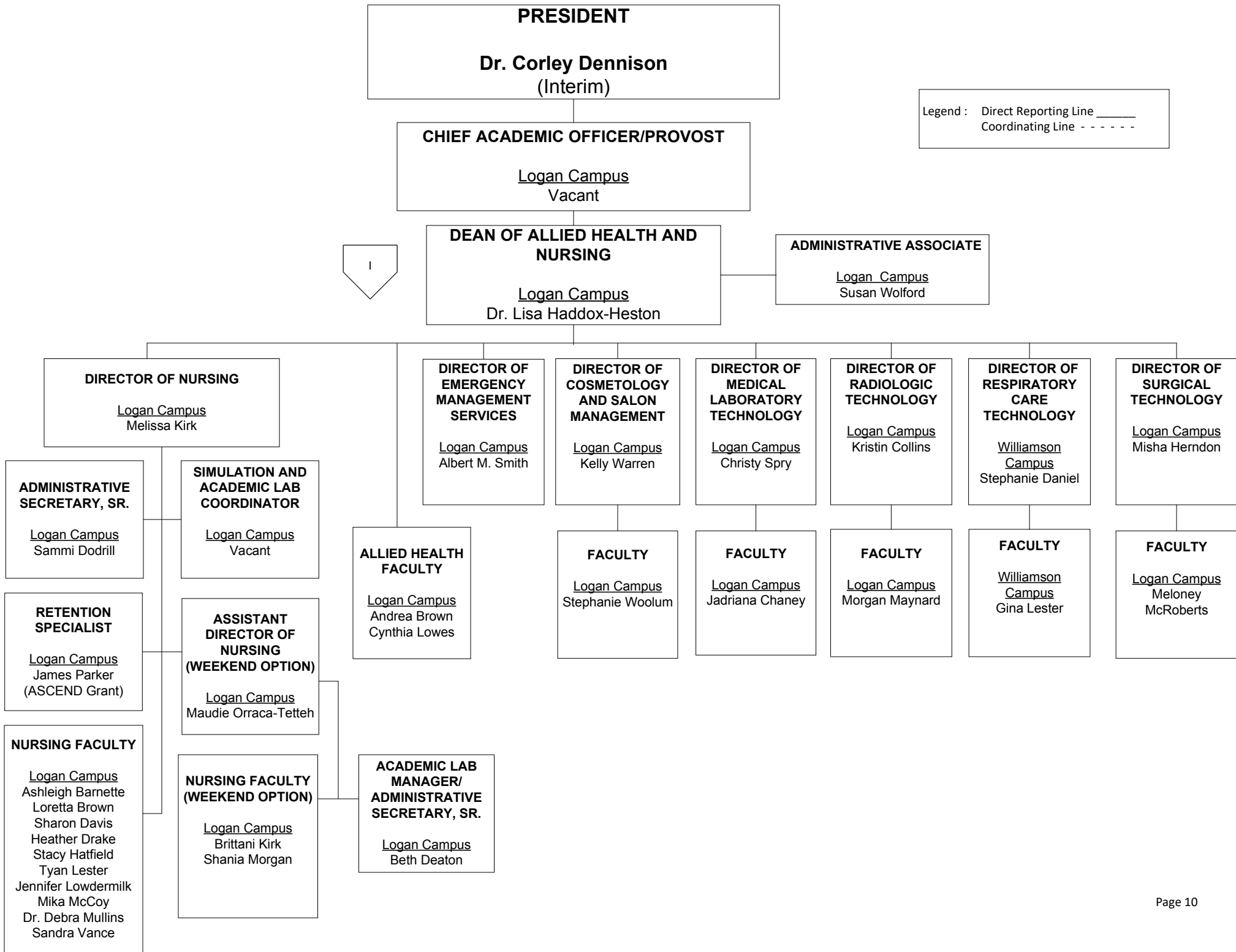
I

J



Legend : Direct Reporting Line \_\_\_\_\_  
Coordinating Line - - - - -

H



Legend : Direct Reporting Line \_\_\_\_\_  
Coordinating Line - - - - -

